



FACT SHEET

For 51 consecutive years, **Homearama** has showcased the finest in custom-built new homes in the Greater Louisville area, and the 2018 show will be no exception! The first conservation subdivision in Jefferson County, Catalpa Farms, will greet visitors with expansive views across ridges and valleys, ever-present gentle breezes, and a tranquil setting that is sure to please. With a wide-variety of price points, this year's **Homearama** will appeal to everyone. Whether in the market to purchase a new home or just looking to get inspired, these unique and beautiful homes will enamor guests with their craftsmanship, ability to bring the outdoors 'in', abundance of wood and natural elements and aesthetic interior surprises, while at the same time introducing the latest in innovation and energy efficient technologies. **Homearama** 2018 will delight, inspire and invigorate, and we hope you will join us.

SHOW DATES

DATES: **July 14 – 29, 2018**

HOURS:

Weekdays: 5:00 p.m. – 9:00 p.m.

Saturdays: 10:00 a.m. – 9:00 p.m.

Sundays: 1:00 p.m. – 6:00 p.m.

Ticket gate closes an hour prior to listed closing times.

TICKET INFO

Regular Admission: \$10 per person

Children 12 and under are free with an adult

Tickets sold onsite, cash or check only

SHOW LOCATION

[Catalpa Farms](#)

17814 Shakes Creek Drive

Fisherville, KY 40023

- A sustainable development with over 200 acres of land
- Abundant preserved open green space
- Secluded villages arranged along ridges with unique architectural themes
- Access trails, lakes and community gardens

FOR A COMPLETE LIST OF BUILDERS AND DESIGNERS

Homearama.com

SPONSORED/PRODUCED BY

Powered By: LG&E

Official Sponsors: River City Bank and RiverCity Flooring

Produced by: Building Industry Association of Greater Louisville

FEATURES

Homearama is several shows in one.

- Be inspired by Louisville's hottest **home builders**, the latest in **building trends** incorporating high-end materials and innovations, interior aesthetic delights and a sense of bringing the outdoors "in"
- Explore comfortable **outdoor living spaces** designed to entertain friends or relax with family and enjoy the tranquil sights and sounds of nature
- View the work of Louisville's top **Interior Designers** providing each home with touches of elegance, ambiance and sophistication
- Enjoy state-of-the-art **home theater rooms, entertaining spaces and fitness areas** equipped with the latest in-home technology
- Understand how high **energy efficiency** appliances, windows, doors and insulation make these homes practical as well as beautiful
- Take advantage of the annual **Homearama Furniture Sale** that is set for July 30 at Catalpa Farms from 1 p.m. to 7 p.m.

ON SITE

Concessions are open daily
Free parking

FIND US

Homearama.com
[FaceBook.com/HomearamaLouisville](https://www.facebook.com/HomearamaLouisville)
[Instagram @HomearamaLouisville](https://www.instagram.com/HomearamaLouisville)
[Twitter @Homearama](https://twitter.com/Homearama)

SPECIAL OFFERS

BUY ONE GET ONE FREE COUPON

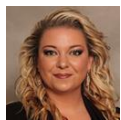
Available at [FaceBook.com/HomearamaLouisville](https://www.facebook.com/HomearamaLouisville) and only valid for Mondays and Tuesdays

Powered By:



a PPL company

Official Sponsors:



Ally Adams

Show Director
P: (502)429-6000
ally@bialouisville.com



Martha Jones

Communications & PR
P: (502)429-6102
martha@bialouisville.com

